



2/36 Pacific Street Bronte, NSW

 2
  1
  1

### Chic coastal style with elevated ocean outlooks

- An elevated north easterly aspect with fresh breezes and natural light
- Well-proportioned floorplan with a combined living/dining area
- A sunlit balcony that captures views over the rooftops to the sea
- Renovated kitchen with sleek finishes plus designer bathroom
- Two double bedrooms with ceiling fans, both with built-ins and additional storage
- Car space on title, floating floors and internal laundry
- Positioned within the upgraded Pacific Manor building
- An excellent investment with solid growth and rental prospects

**Price:** \$1700000

**Council Rates:** \$323.20 p/q

**Water Rates:** \$156.70 p/q

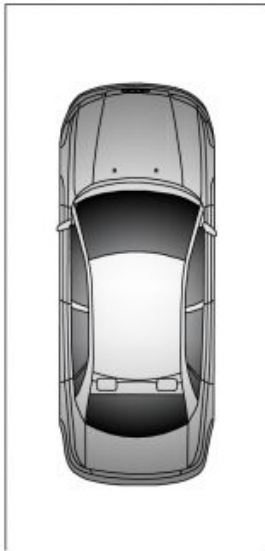
**Strata Rates:** \$811.68 p/q

**Cassandra Romano** **Anthony Romano**

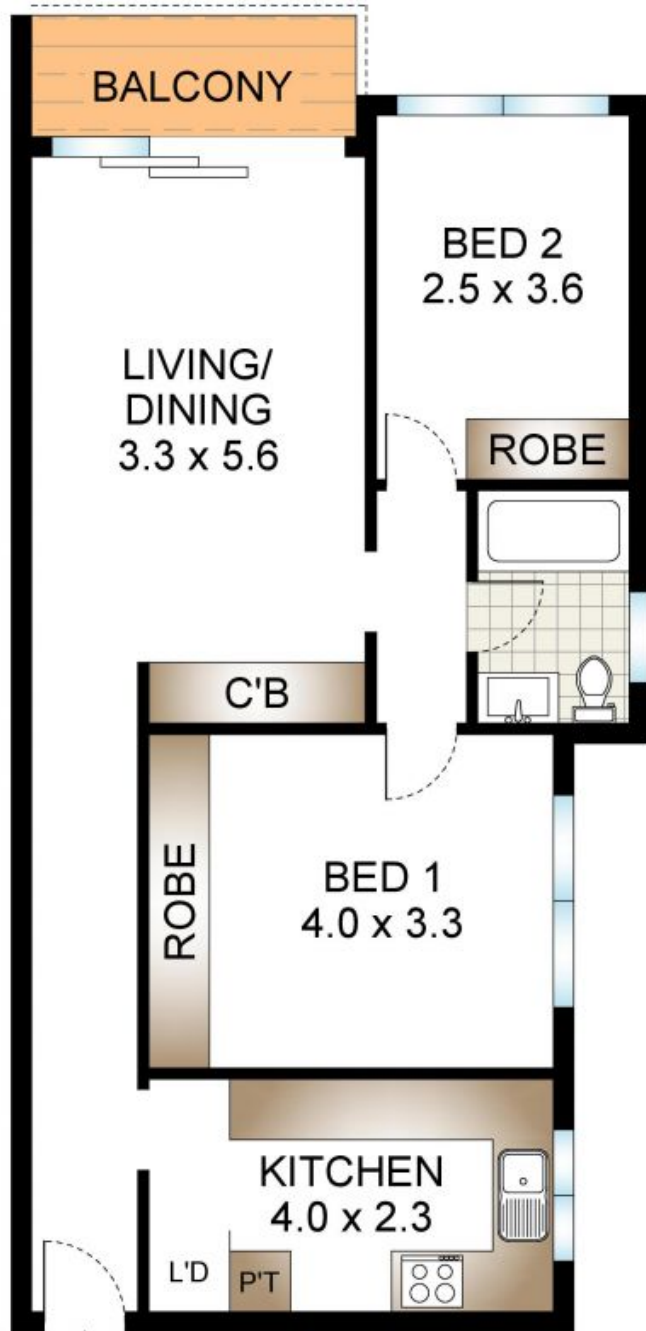
0410 564 659

0416 027 475

2/36 Pacific Street  
Bronte



PARKING



LEVEL ONE  
APARTMENT

"The information contained herein has been provided by our Principal and third parties, which we merely pass on without any representation or warranty given, intended or implied by us as to its correctness and with no liability accepted by us in this regard. You must rely on your own inquiries as to its accuracy or otherwise."