



18/133-135 Bunnerong Road Kingsford, NSW

 2  1  1

Sunny Renovated Parkside Apartment

Located directly across from the expansive Rowland Park, this renovated and airy apartment boasts a sunny north-facing aspect, spacious interiors and leafy views towards the city. Situated within a quiet building, it is conveniently positioned within walking distance to Kingsford village shops, UNSW, the light rail, express city transport and Prince of Wales Hospital precinct.

This sunlit oasis offers:

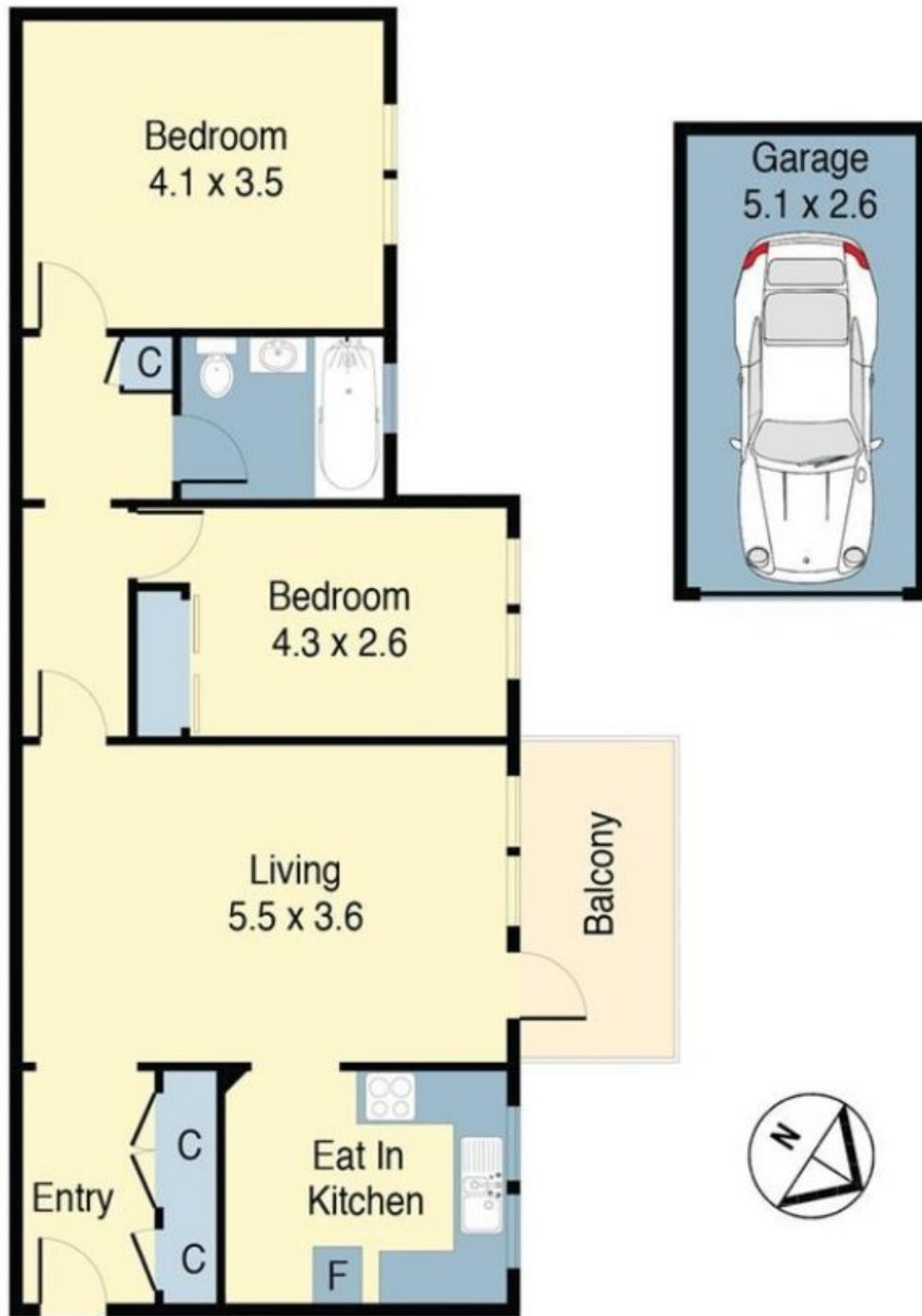
- Two double bedrooms, one with built ins.
- Sun drenched living opening to a north-facing balcony.
- Modern and sleek kitchen with electric cooking, dishwasher and space for a washing machine.
- Large lock up garage with ample storage space; and a shared laundry room.
- Renovated bathroom.

This apartment's central location and close proximity to beaches, makes this home is perfe

Price: \$750 pw

Kira Graham

0432 171 559



18/133 Bunnerong Road, Kingsford

DISCLAIMER: PLANS SHOWN ARE FOR PRESENTATION PURPOSES AND ARE NOT PART OF ANY LEGAL DOCUMENT. ALL MEASUREMENTS AND FIGURES ARE APPROXIMATE.