



1/58 Victoria Street Beaconsfield, NSW



Tri-Level Townhouse with City Skyline Views

Situated in a boutique complex of seven, this contemporary tri-level townhouse enjoys stunning open plan living with views to Centrepont Tower and the city skyline. A well designed floor plan offers terrific indoor/outdoor flow, with spacious living areas and generous accommodations. Peacefully positioned in a tree-lined street the home offers access to a fabulous Inner City lifestyle, close to trendy Alexandria cafes, shops, Green Square Station and city buses.

- Caesarstone kitchen with glass splashback & quality appliances
- Spacious open plan living area flowing to a landscaped courtyard with water feature
- Tonnes of natural light on all three levels
- Loft bedroom with sunny balcony and city views
- Two bedrooms on second floor with built-ins, one with ensuite
- Main bathroom with hidden laundry

Price: Sold by Peter Bakas

Council Rates: \$279.20 p/q

Water Rates: \$265.69 p/q

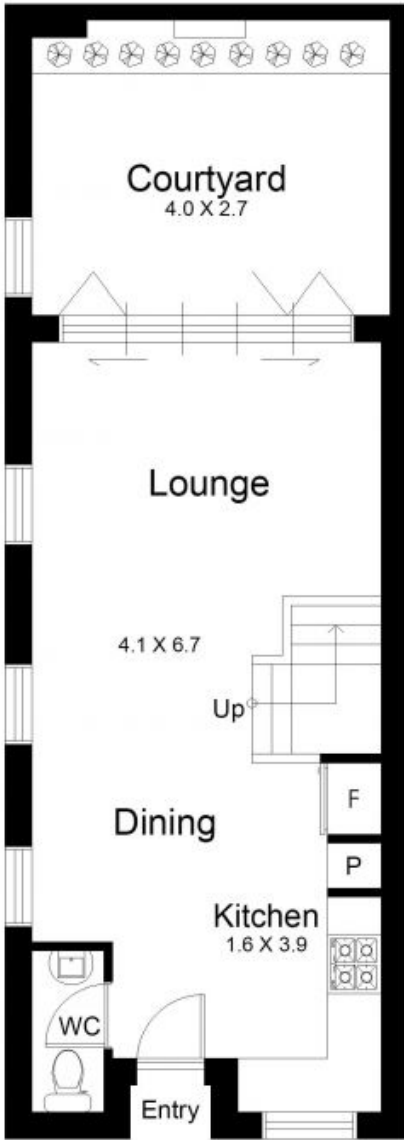
Strata Rates: \$1,544.32 p/q

Peter Bakas

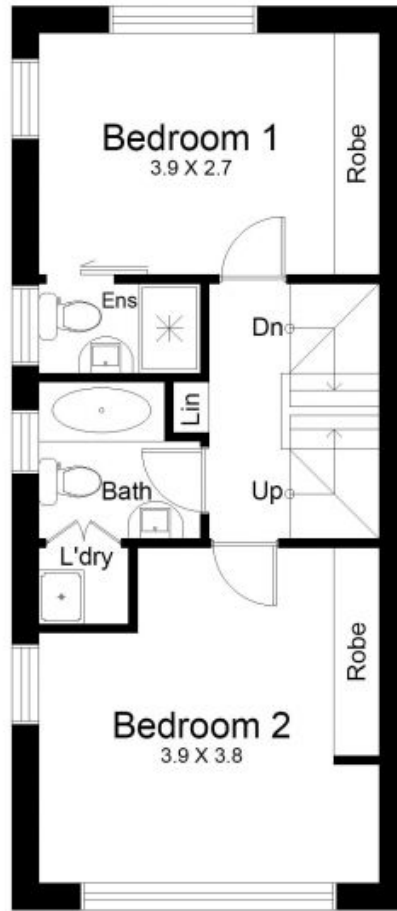
0425 252 541

Peter Bakas

0425 252 541



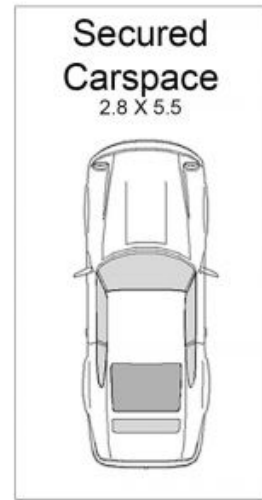
Ground Floor



Middle Floor



Top Floor



WARNING: DISCLAIMER This information is not to be relied upon. It is strictly used for marketing and illustration purposes only. All measurements are approximate. Not to scale. No liability accepted. You must rely on your own inquiries and seek advice from your solicitor. Floor plan by cnkplan@cnkplan.com.au www.cnkplan.com.au